



PAST, PRESENT & FUTURE



THE PAXTON CENTRE, LUNDIN LINKS

Stories about the Paxton Centre and Homelands

Will be found on pages 4 & 5

Photo: Largo Camera Club

August 2021

Issue 4

An LCT Publication

Price: Free Distribution

Donations welcome: see page 3

Editorial

This is the fourth issue of *Largo Links*, meaning that we have completed a full year cycle: November – February – May – August. Our thanks go to everyone who has contributed to the success of this new venture.

We are always looking for ways to improve the magazine. As well as the paper edition which is delivered by our team of volunteers, we have copies in large print, you can go online to read it or you can have it emailed to you. See page 16 for these ways of reading *Largo Links*. If you can think of other improvements, please let us know.

Which brings us onto another topic ... So far, it has been mostly us speaking to you. We would like to encourage you to write to us. So, if you respond to this suggestion, there will be a new feature: *Letters to the Editor*. We cannot guarantee that we will print every one, but we will do our best ... as always.

Contact Us:

Send a message to the Editor:

By email: editorlargolinks@gmail.com

By letter: Editor, *Largo Links*,
c/o The Library,
7 Lundin Square
Lundin Links, KY8 6BH



We have a
post box
inside the
library

If you wish to place an advertisement:

largolinksadvertising@gmail.com

Our Advertising Editor will explain sizes and prices. You may send your own artwork, or ask us to include certain text and, perhaps, a logo.

Sending a report from your Club/Society:

Send it to the Editor. If it requires re-writing in any way, he may put you in contact with one of our reporters.

Guideline: half-a-column of text.

These reports will be printed free-of-charge. You may also wish to place an advertisement: see above.

Next issue - please note these dates:

Advertising: book before 1 Oct

Reports: send before 10 Oct

To include details in the next issue's Events Diary or in our Directory:

largolinksevents@gmail.com

Our Events Editor will help you.

If you would like to make a donation:

All donations are gratefully received.

- We have donation tins at the Library, and at Zaphar's and Andy's stores.
- Donations may be sent to the Editor
- You can also donate by text or online – see the section on the next page.

We have two principal sources of income: paid-for advertising and your donations. If you value having this magazine free-of-charge, please consider how you might support us.

Upper Largo Camera Club

The Camera Club is attended by a small group of friendly people interested in photography. The club facilitates the development of its members' photographic skills and helps get a better understanding of the capabilities of their cameras.

We include local field trips, in-house projects, discussion on members' photographs with constructive comments and talks/advice on the use of their cameras.

The club also takes part in some small local exhibitions.

Meetings are normally at 7.30pm on a Monday evening in the Simpson Institute Upper Largo but, like everything else, this is on hold during Covid. During this time, members have been posting photographs on our Facebook page. We are now meeting on Zoom but hope to have outings soon and of course we have been providing the cover photographs for the *Largo Links* Magazine.

If you would like to know more, contact Ian Macfarlane on **077525 96380** or at: ianmacfarlane157@btinternet.com



The Editor is James Kay.
He has been ably assisted by:
Amy Dalgleish, Catherine Taylor,
Eileen Reynolds, Fiona McCaul,
Fiona Wyllie, Jan Kerr, Kirsty
Chatwin-Lee, Matt Allan and
Roger Ferguson.

Donations by Text or Online

We have set up two electronic donation platforms with:

DONATE

DONATE™ is an integrated platform across text and web. for one-off and everyday fundraising. It is very easy to use.

You can donate by text message*‡ **To donate £3, text LINKS to 70331**

You can donate online*‡ visit <http://easydonate.org/LINKS>

* Fundraising, payments and donations will be processed and administered by the National Funding Scheme. They will be charged at your standard network rate. For Terms & Conditions, see www.easydonate.org

‡ **LARGO COMMUNITIES TOGETHER** needs to raise funds for this and for other charitable purposes.

Vacancy on the Editorial Team



We would like one volunteer to be a reporter on our team.

Most of the work would be contacting people who regularly send reports about activities around the villages. It would involve reminding them of deadlines, receiving their reports and, if necessary, agreeing an alternative wording.

Occasionally, you might be asked to write a story about an event.

If you have an interest in this position, please contact the Editor:

editorlargolinks@gmail.com

Homelands

Homelands was a large villa on Leven Road, Lundin Links, built around 1859 along with its neighbour Haworth. Both houses were the result of a partially executed plan, drawn up by the Standard Life Assurance Company, who had purchased the Lundin estate in 1852. It had been thought that the arrival of the railway in 1857 would trigger a property boom in the village but sufficient interest failed to materialise and only a handful of houses were built. Homelands, with its 3 public rooms and 8 bedrooms, was designed by architect James Campbell Walker, with a turreted roof and elaborate timber barge boarding around the upper windows.



Early residents of Homelands included John Snodgrass Chalmers. He was the only surviving son of General Sir William Chalmers, a distinguished Fife soldier (who had nine horses killed under him in his military career - including three at Waterloo). Mr John Walker – a retired

farmer from Ceres – lived at Homelands for about 10 years until his death in 1884 age 90. Walker was a great philanthropist and left various trusts in place after his death.

In 1908 the house was purchased by Robert Carswell Paxton. Kilmarnock-born Paxton had spent years as a sheep rancher in Texas before settling in Lundin Links. His family owned Homelands for decades, until the last member of the family, Isabel Carse Paxton, passed away in 1993. The Paxton family contributed immensely to the local community and to a range of good causes.

Homelands acted as a base for a Red Cross work party during the First World War. In 1946 the house had a wing converted into accommodation for short respite stays for those affected by Multiple Sclerosis. Isabel Paxton left Homelands to charity, with the vision to establish a place where those affected by disabling conditions could enjoy a break.

The accessible holiday lodges, which are now run on the site by the Homelands Trust-*Fife*, provide precisely that. The trust is totally independent, with no links to any other charity.

The house itself was demolished around 2006. The trustees named the Paxton Centre in honour of the family, while the whole estate, including the Centre and the lodges, is now called Homelands.

Those interested can read more about local history at:

lundinlinks.weebly.com

The Paxton Centre

The Paxton Centre came about through the generous legacy left by Miss Isabel Paxton. She bequeathed her estate to charity following her death in 1993, including the family home, 'Homelands'.

The Homelands Trust-*Fife* was set up in 1998 as an independent registered charity to carry out Miss Paxton's wishes. These were to provide respite care and holiday facilities for people with a disabling or incurable condition. By the 21st century, the term respite had widened to include activities such as complementary therapies, arts and crafts, exercise classes, yoga, Pilates, support groups - anything that would give carers and those they cared for a break from each other to allow them to recharge their batteries. The Homelands trustees felt that a community hub offering a range of respite activities would cater for locals in need of some respite, whilst the lodges would provide much needed accessible accommodation to enable disabled people and their families to enjoy a break together.

The centre is situated in the grounds of Homelands, sitting alongside the Trust's four accessible, self-catering lodges. It was completed in 2014, shortly after the lodges opened. It is open to guests staying at Homelands and is a community hub, open to everyone, not just to disabled people and their carers.

There is an automatic door at the entrance and three more on the ground floor. There are extra-

wide doors throughout the building. There is an

eight-person lift allowing access to the first floor and an accessible toilet downstairs with a left-side transfer, whilst the one upstairs is a right-side transfer. A portable Geomarc hearing induction loop is available at reception. The car park contains two public car charging points.

Before closing due to the pandemic, the Centre featured a café, serving lunches three days a week. There were also various classes, support groups and therapies on offer. Rooms were available for hire by groups and individuals. If the current easing out of lockdown continues, it is hoped that the Paxton Centre can reopen in the early autumn. However, it will be on a limited basis initially. Some of the rooms are required to store PPE, and other necessary equipment to ensure the safety of lodge guests. All soft furnishings, books, games etc from the lodges have been removed and are being stored. Once building work on phase 2 commences, the contents of the white storage container will also have to be stored in the centre.



Community Lifesavers



In Scotland every year around 3,000 people suffer an out-of-hospital cardiac arrest. Only around 10% survive. Early CPR and defibrillation can save over 50%. East Neuk First Responders has worked with local Community Councils and groups to raise money and install 52 PADs (Public Access Defibrillator) in the East Neuk area. The defibs have been taken to numerous incidents, saving a number of lives.



If this happened in every community in Scotland over 1,200 more lives could be saved every year. Defibs tell you exactly what to do and will not deliver a shock unless one is required. Anyone can use a PAD. No training is required. However groups, such as ENFR, regularly deliver CPR & Defib awareness training making rescuers more effective, but you need to act quickly.

Every minute of delay can mean up to 10% chance of survival is lost. So phone 999, start CPR and use a PAD as soon as it is available. Doing CPR and applying a defibrillator will do no harm if the casualty is not in cardiac arrest so don't delay, if you are unsure, just do it! We can all be Community Lifesavers.

To find out where PADs are installed in our local area view the list on page35.

You can contact the
East Neuk First Responders on
0800 6444 094 or eastneukfr@hotmail.com

Open Gardens Event

As was mentioned in the last Largo Links I am hoping to organise an Open Gardens Event in the community in 2022. There was some response to my article and four people have stepped up to say they would like to open their gardens. It would be great if there were more - the criteria is that you love your garden/window boxes/planters and want to share it with others! The event will be a celebration of how our gardens have helped us survive lockdowns, not a competition!

Our tiny bit of research seems to point to mid to late June opening. Please get in touch if you would like to take part!

Yvonne Stephenson

stephensonyjw@gmail.com

Lundie Theatre Group

Unfortunately we were unable to stage our latest play as planned in July because of continuing restrictions, so we are now planning to perform 'Full Circle' in November. We have not wasted the time though, because we have been doing read-throughs for future performances. Possible plays are 'Blyth Spirit' and a very funny version of 'A Christmas Carol', along with a Panto for 2023.

We are always happy to welcome new members to act, direct, or help with stage building, props, makeup, or costumes.

Email

bs.lundie@gmail.com

if you would like more information.

Largo Estate Group - seeks new members

Isn't it great that things are happening at Largo House? The owners are forging ahead with a veg and flower growing enterprise as well as some stonework repairs and tree felling. I'm sure all of the community wish them well. It's great to see progress after over 70 years where nothing much happened.



The LCT Estate Group is keen to capitalise on the good communications we have with the owners and explore how we might help and possibly involve ourselves to the benefit of the community. The community came together a couple of years ago and recorded its vision which has been shared with the owners of Largo Estate. Given the heritage and the position of Largo House in our community we are keen to follow your thoughts up.



Thank You **NHS**
SCOTLAND

Do you think you might have skills or something to contribute to the group as we expand? If you could devote some time to help and commit to a meeting a month then please email:

ViceChair@largocommunitiestogether.org.uk

The Arts Society, Fife

We are a friendly, local society affiliated to The Arts Society, a leading arts education charity with over 90,000 members worldwide. Our members come together from all over Fife to hear expert lecturers on a variety of arts subjects. We normally meet in the Corn Exchange, Cupar, every second Tuesday of each month from September until June. Members can also support arts and heritage projects in the community, and go on visits and study days. All our lectures have been online this year but these have been well attended and enthusiastically received. Our first four lectures of our new season will continue online, with the hope of returning to our venue in January 2022. Our next season begins on 14th September at 2pm with "Garden Hunting in China" by Timothy Walker. New members and guests are always welcome. For further information, please refer to:

theartssocietyfife.org.uk

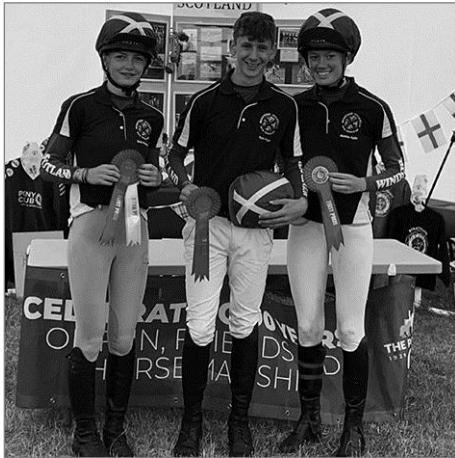
email: *info@theartssocietyfife.org.uk*

or go to: *connected.theartssociety.org*
where you can watch short lectures and discover more.

Local young athlete wins Tetrathlon at Windsor Horse Show

Many congratulations to our local young athlete Kyle Forgan who came first individual overall at the National Pony Club Tetrathlon Championships held at the Royal Windsor Horse Show recently.

Each year the best three athletes are chosen from each of the eight regions around Britain including Northern Ireland to form a team. Scotland won the overall team event also.



Tetrathlon (meaning four) is a team and individual competition organised by the Pony Club for its members and is popular worldwide. It comprises Shooting, Swimming, Running and Horse Riding and is a variant of, and major recruiting ground for, the Olympic sport Modern Pentathlon. Competition levels progress with age. The Shoot involves shooting with air pistols at turning targets between 7 and 10 meters, the Swim is the distance swum in 2 to 4 minutes, the Run is normally cross country over a distance of between 1km and 3km and the Ride is over a cross country course, the most exhilarating phase for many. Kyle's training schedule means that he swims four times a week, runs twice a week, horse rides twice a week and shoots as often as he is able.

Z A P H A R ' S

Your local Premier Store

Opening Hours

5 a.m. – 7.30 p.m. (Monday – Saturday)

6 a.m. – 5 p.m. (Sunday)

Free local deliveries

Tel: 01333 320851

Summer Wildlife

Summer is the season of plenty where wildlife is concerned! Many of the young birds and mammals of Spring now leave their nests, dens and burrows, to boost local populations as they learn the skills necessary for survival. The dawn chorus of spring and early summer becomes quieter and quieter as many of our familiar garden birds enter a period of moult and recuperation after the rigours of the breeding season. Not all though! Some may be late nesters or else have second or even third broods, depending on the species. If you are contemplating major hedge pruning or a spot of tree surgery, please do bear this in mind and consider holding off until Autumn when the breeding season is well and truly over!

In summer, our wildflowers are at their most colourful. A walk along the Fife Coastal Path on a warm sunny day is a joy at this time of year! The uncultivated strip of land along the coast is often species rich. Knapweed, field scabious, rest harrow and oxeye daisy are among the flowering plants which provide nourishment for a host of moths and butterflies, bees, hoverflies and many others!

Look out for black and orange striped cinnabar moth caterpillars. These are found on ragwort, a native plant which is poisonous to horses and livestock. The caterpillars feed on the plant and absorb the toxins, so they themselves become poisonous. The bright colours serve as a warning to potential predators!

Summer is the time when Harbour seals give birth to their pups. Unlike their larger grey cousins, most harbour seal pups are born with their adult coats, having shed their white baby fur in the womb. Well developed, they can swim and dive alongside their mother soon after birth!

Perhaps one of the nicest aspects of the season is that those of us who love watching wildlife can do so outdoors, in comfort, without the need for hats, gloves and fleecy layers! Let's all enjoy it while it lasts!



Deirdre Munro, Fife Coast and Countryside Trust

TAXI CENTRE

DOWNLOAD THE TAXI CENTRE FIFE APP

01333
300 300



TRUE 24 HOUR SERVICE

6, 8 & 16

SEATERS AVAILABLE



IN VEHICLE CARD PAYMENTS ACCEPTED



Lawview Christian Fellowship

Despite the restrictions of lockdown Lawview Christian Fellowship is still very active and looking to the future.

The group is led by Rev Daniel Pollin, Minister of Coastline Community Church along with retired Baptist ministers Rev Frank Murray and Rev Bill Macdonald. Frank also has a background in education, and Bill is currently one of the Regional Pastors for the Baptist Union.

We are looking forward to meeting together again soon, but continue to be grateful for Zoom. We meet on Mondays for coffee, Tuesday evenings are for Study and Prayer and on the last Sunday of each month we celebrate the Lord's Supper.

We are grateful that our ministry goes far beyond the local area. Each Sunday we broadcast an hour of worship on Phoenix Country Radio.

Our programme, *Here I am to Worship* reaches a congregation not just in Fife but throughout the United Kingdom and beyond. We have regular listeners in

Australia, USA, Canada and South Africa making up some of the 8,000-plus people who tune in each week.

On two occasions we have broadcast a programme called *Down Memory Lane* where the focus of the music has been hymns and choruses from days gone by. These programmes have proved to be very popular and have touched the hearts of many of the listeners.

If you would like more information about our activities, then please visit our website

www.lawview.online

where you can find our weekly newsletters. You can also find us now on Facebook.

Our Production costs are largely met by our advertisers.

Please mention, wherever possible, that you saw an advertisement in



Nicola McFarlane Young

nicola@beachart.co.uk

07921 652542

beachart.co.uk

- established 2011
- Driftwood mirrors and furniture
- Driftwood and coastal art
- Seaglass jewellery
- Commissions welcome
- Beach art in the beach hut open throughout summer on weekends 12-5pm or by appointment

Lily's @ The Aurrie

So Arts Week is over for another year and what a success it was! Moving forward we will sell fresh, made to order sandwiches; soups; delicious cakes & scones and tray-bakes by local cake-makers. Some of you will have tasted our cooking when we were in lockdown delivery mode and it will continue in that vein, with seasonal cafe favourites including a range of vegetarian, vegan and Gluten Free options.

We are a dog-friendly venue and can't wait to see your four-legged friends for their own refreshments and snacks. Helen and I feel so lucky and blessed to have the support and faith of Andrew and Carol, the multi-talented and lovely owners whose initiative this is. They have worked painstakingly hard getting the building ready; I'm sure you will agree that

they have done a wonderful job retaining the character of the building, giving it a fresh lease of life and ensuring it is fit for purpose and remains in and for our community.

We want our focus at work to be the same as our ethos for life:

Family; friends; community; food; art; music; mindfulness and great craic!

Helen & David



Lundin Links

In old days, it was called Milltown, and all the corn in the parish was brought to Lundin Mill to be ground. On one occasion we find the miller up before the Kirk Session for grinding corn on a Fast Day.

Extract from a book about the villages, 1907.
It may be read in the Library.

KINGDOM CARPETS

Carpet - Suite - Rug - Vinyl- Laminate

Your local Flooring Expert since 1971.

Thank you to all our amazing customers for your support over the last 50 years.

We look forward to providing our knowledgeable service and exceptional prices for years to come.



8 Sea Road, Methil, Fife
Tel: 01592 714 600
www.kingdomcarpets.co.uk
sales@kingdomcarpets.co.uk





To celebrate the launch of our Summer Menu, we're offering readers a fantastic one-off discount of 20% off our menu which is available over lunch and dinner.

It's been a busy time since we re-opened over a month ago now, and we would like to thank all our local customers for their support, it really has been great to see so many local folks popping in – it's much appreciated!

**Come and enjoy the best of Scottish produce, seafood and steaks, together with our usual bar favourites in an informal setting.....
.....with the best view around!**

Why not try our sharing plates with 20% off – our seafood platter with a glass of chilled sauvignon, or our chateaubriand over a glass of merlot?

**Booking – 01333 320368; reception@theoldmanorhotel.co.uk;
or follow us & book via facebook.**

T&Cs

Bookings must be made direct with the hotel, quoting the code OMH-20

20% discount applies to main menu, and food only

We always make every effort to accommodate any dietary requirements and food intolerances

Subject to availability

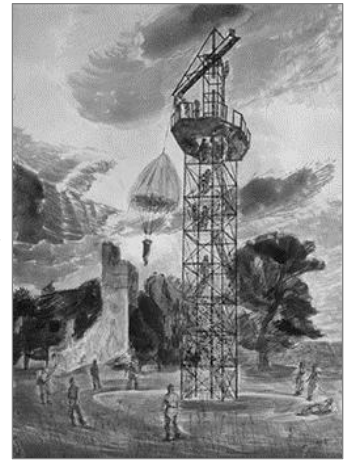
All relevant Scottish government guidelines will be adhered to

Track & Trace customer details will be required

Malpy Gaj

In *Largo Links*, February 2021, this name was mentioned. It was the Polish description of Largo House: "Monkey Playground", so-called because of the training activities which took place in the grounds.

Here is an artist's impression of the 100-foot tower on which they practised parachute jumps. It was painted in 1943.



JANE'S AT NINETEEN

Gifts

Accessories

Fashion

Home Interiors

Or pop in for takeaway coffee and cake!

Open 7 days



Shop online at
www.janesat19.co.uk



The Finishing Touch

**"Specialists in all types of Blinds,
Curtains, Tracks & Accessories"**

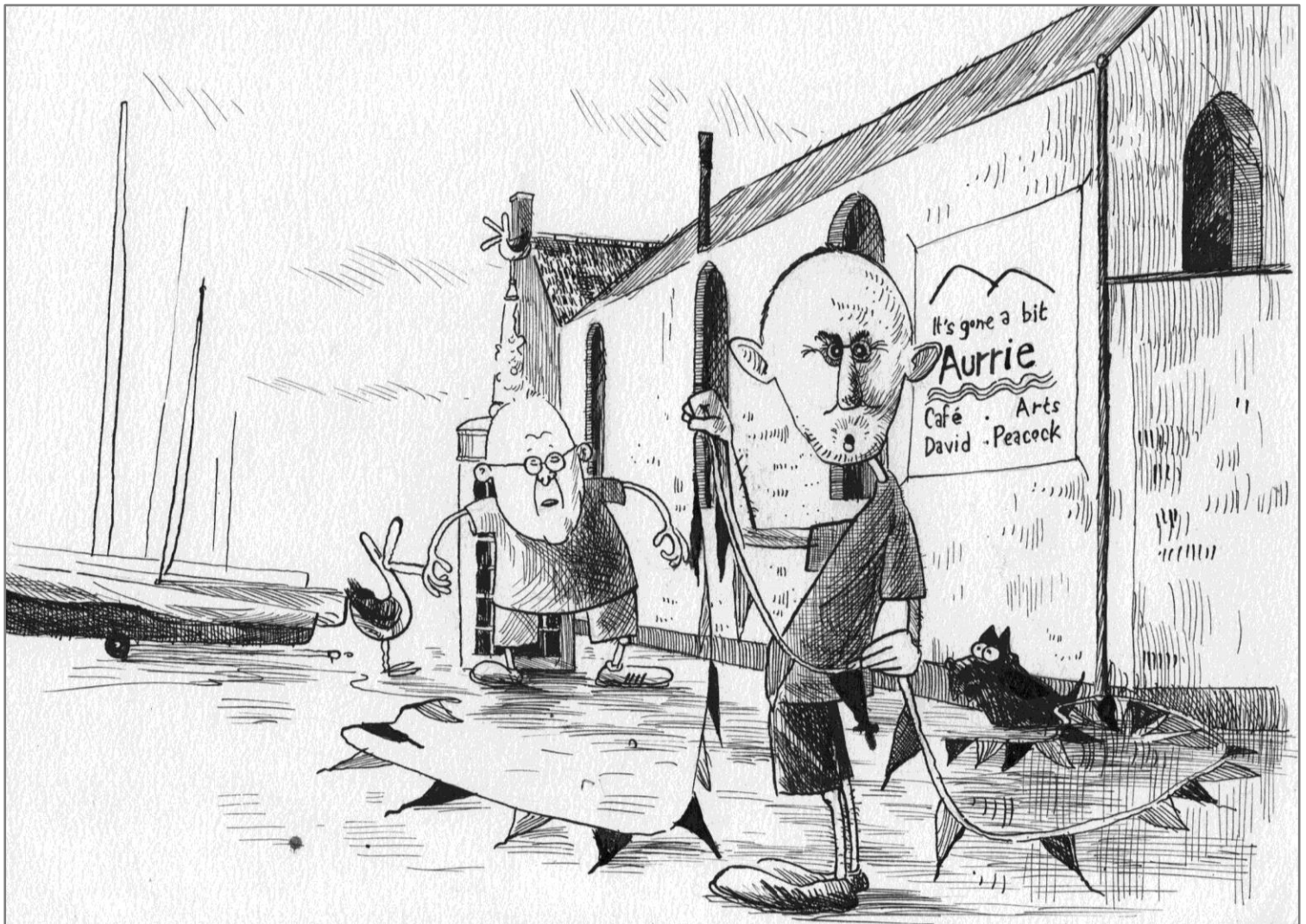
1a Crescent Road

Lundin Links KY8 6AF

Shop: 01333 320956

Mobile: 07939 413425

email: david.w.nicoll@hotmail.co.uk



Largo Parish Church

We have been back at worship in the Church building since the middle of April and it has been wonderful to see people joining the Sunday 10:30 a.m. service. We have had to ask people to book a place for Sunday worship (details are on our church website or Facebook page). Singing in church was re-introduced in the middle of June, however we have still to adhere to the wearing of face mask throughout the service.

We have also re-introduced JAMES Club (Jesus And Me, Every Sunday – which is like Sunday School) as part of our Sunday worship time, giving children who come along with their family a short time in church then going to the Stables for fun and activity time. There is always a warm and friendly welcome awaiting all who join us at worship.

Fife Open Doors 2021 - last year, this ran virtually due to COVID restrictions but this year it is hoped that the event will be close to "normal". Buildings in Fife will be open over 3 consecutive weekends from Sept 4-5th and details can be found on line e.g. 2021 Weekends (doorsopendays.org.uk) or in the booklets being produced by the Fife organisers which will be available nearer the time. Largo Parish Church (Church Place, Upper Largo) will be open from 2 to 5pm on

Sunday 5th September 2021. There will be stewards and a free leaflet to guide you round the church building, parts of which are 400 years old. We have access to a large amount of historical information about local families who are commemorated in the church. We look forward to the day and warmly invite you to come and see inside the church building which you may have seen from the outside many times. There is plenty of parking space in the grounds of the "Stables"- the church hall just across the

road to the North of the church, in Church Place. The Largo Parish Church Guild hopes to be able to meet up again on Tuesday 5th October in the Durham Hall for a Social Gathering. Further details to follow.

Rev Gavin Boswell
The Minister

Website: www.largochurches.org.uk
FaceBook: Largo Parish Church
Email: infoLargoChurches@gmail.com




homelands

Highly accessible luxury self-catering holiday lodges for those with disabilities, life limiting conditions and their carers.

www.homelands-fife.co.uk
01333 329039
Registered Charity SCO47615

Largo Cottages



Largo Cottages
Cosy Cottages in Fife

Cosy pet friendly holiday cottages in
Lundin Links, Upper & Lower Largo

Visit our website for more details:

www.largocottages.co.uk
01333 360301

Lundin Ladies Golf Club

Golf is one of the fortunate sports that can be played with only a few restrictions and, as such, we have been very busy. We have had many new members who are enjoying the great outdoors whilst playing golf. We, along with help from Lundin Golf Club, have been coaching juniors which has been so popular that we had to have a waiting list. It is great to think that we could be helping successful players of the future. For more information about joining, email llgolfclub@gmail.com

levenmouth

PRINTERS AND SIGNS



Toll Park, Station Road, Muiredge, Buckhaven, Fife KY8 1JH.

Tel: 01592 715531 • sales@levenmouthprinters.co.uk • www.levenmouthprinters.co.uk



The Scottish Parliament
Pàrlamaid na h-Alba

Jenny Gilruth MSP



**Member of the Scottish Parliament for
Mid Fife and Glenrothes Constituency**
covering Lundin Links and the Largos

I am currently holding telephone surgeries.

For an appointment, please contact me on:

E: Jenny.Gilruth.msp@parliament.scot **T:** 01592 764815

The cost of this publication has been met from parliamentary resources.

Reading *Largo Links*

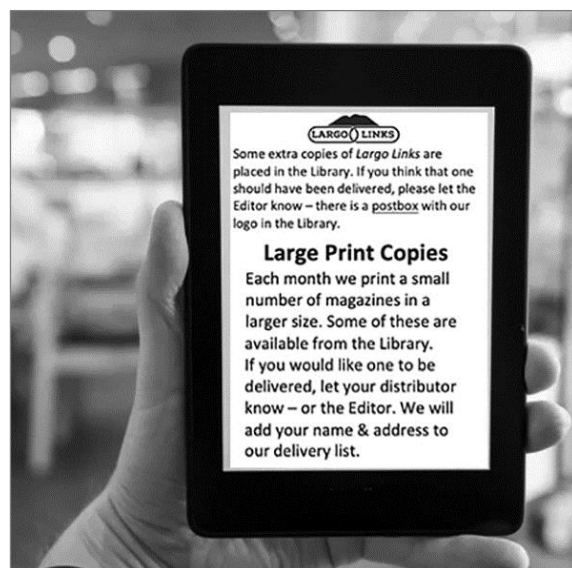
Most of you will receive this magazine through a delivery to your door. If you did not receive your copy this way, please let us know, so that we can deliver next time. Some spare copies are placed in the Library and in Zaphar's & Andy's stores.

Volunteers. Our deliveries are by a team of volunteers. We do, however, have difficulty in recruiting people who will deliver to our outlying areas. If you would be interested in taking *Largo Links* to some of these more isolated communities, please let us know.

Online version. We do publish an online version of the magazine (see the box at the bottom of this page). Please feel free to send this link to anyone who might like to read the magazine on screen.

Email version. The online version can be sent by email. If you, or someone you know, would like to receive *Largo Links* in this way, then contact the Editor. Your email address will be added to our online subscriber list.

Large Print. We also print some copies of *Largo Links* in a larger format. Again, these will be placed in the Library and in Zaphar's & Andy's stores. But if you would like one delivered, then contact the Editor. Your name & address will be added to our delivery list.



Please note:

The online version is in the larger format.

If you wanted to print it at home, then you could do so for yourself or for someone else who needs it.

The Simpson Institute Upper Largo

We are looking for volunteers and people interested in joining our committee.

We are particularly looking for anyone interested in helping with our website.

Contact Samantha: nineteenteam@hotmail.com



Community Choir

The Lundin Links Community Choir usually meets on a Tuesday evening between 7pm and 9pm in Montrave Hall, singing a variety of music, in unaccompanied, four-part harmony. There is no requirement for singers to read music as the songs are all taught at the practices and recorded sound files are available for at home practice (not compulsory!). Most of all we have fun. Throughout the pandemic a choir practice has been available on Zoom most weeks, not everyone could attend though it has filled a singing gap for many, and has been harder work than the actual choir for Blair! Most of all we have realised just how much we have missed the feel-good factor that comes from singing together and it will be a joyous occasion when we can start singing together again. We hope that this will be the end of August. With so long a gap it will be very much back to basics when we get started again so it would be great to welcome anyone who would like to join us.

We hope to be able to have a Christmas Concert, (we usually have a short concert in the summer and at Christmas) and all being well, sing in the Fife Music Festival when it re-starts.

Contact Blair Edwards **07851 682317** or Keith Davidson **07947 554472** for more information or email:

lundinlinkscommunttychoir@gmail.com to be included in our mailing lists so you can be updated about choir start dates.

Blair Edwards

Lundin Bowling Club

The bowling Season is well under way now. We have coaching sessions on a Wednesday afternoon 2pm to 3pm for members and non-members who wish to have a try at bowling. It's an outdoor sport that can be played for anything from a few minutes to an hour or more.

We are also starting family bowling sessions on Sunday mornings from July 25th, 10am to 12noon. These are open to non-members as well as members. The cost is £5 per family to non-members. Maximum of 8 people per rink. Perhaps there is a family you would like to challenge to a match? Instruction will be available if you haven't bowled before. Send an email to

secretarylundinbowling@gmail.com if you would like to book your session on a Wednesday or Sunday.

Penny & Black

Interiors, gifts and homeware
shop in Lundin Links

Open Thursday to Sunday

Tel: 01333 320415

Email: *naelle@pennyandblack.co.uk*

L a r g o A r t s W e e k 2 0 2 1 ...



Figure 1: The Largo Obelisk

Following the cancellation of last year's festival, the annual Largo Arts Week of 2021 got off to an exciting start on Friday 16th July, with the much-anticipated unveiling of Alan Faulds' latest addition to his collection of local community sculptures. Perched atop the newly-refurbished Lower Largo telephone box, the Largo Obelisk is distinctly representative of Alan's unique, colourful and darkly humorous style, and was welcomed with applause by the crowd that gathered, eager to get a first glimpse.

This year the Largo area played host to 34 open studios of 60 local artists showcasing their craft, double that of the 2019 festival, as well as a variety of musical and spoken word events, during a week drenched in sunshine. It was also an opportunity for the Largo Communities Together (LCT) to update

locals on progress with the Largo House Estate discussions, and its new Veg Box enterprise, making fruitful use of the disused Walled Garden.

On the first Saturday, my husband and I and our toddler, Harry, had the pleasure of milling amongst the many visitors, visiting a few studios, and were fortunate to chat to the extremely talented individuals about their work. From Keiko Murkaide's unique method of preserving precious memories within glass, Gillian Barrie's mixed-media representations of local harbour scenes and



Figure 2: Keiko Murkaide

David Mach's thought-provoking collages to Susan McMillan's stunning pearl jewellery, Andrew Stenson's drawings of the juxtaposition of nature and manmade objects, and the photographs and verses from the Swans of a Beach, the artists' passion and enthusiasm was palpable, and the quality of the workmanship was truly inspiring. It seemed that for most the heart of the inspiration for their work was undoubtedly the local area, rich and diverse as it is. However, through my



Figure 3: Gillian Barrie

... The Opening Days, by Kirsty Chatwin-Lee

conversations there was a common narrative to the artists' wider stories in that the lockdown, in response to the Covid-19 pandemic, has, for some, been challenging - forcing them to adjust their art, their markets and how they operate - and for others has been extremely productive. Now, though, was the time for them to unveil their work for us all to appreciate.

It goes without saying that many thanks should go to Largo Arts CIC for organising another outstanding event, as well as to all the artists and volunteers for taking the time to stage such an engaging and inspiring week.



Figure 4: Susan McMillan4

As we wandered home we noticed that it wasn't only the visitors that were keen to show their awe and appreciation, nature also made its voice heard...



Figure 5: David Mach

... a love heart in the sand on Lundin Links Beach! A fitting end to a lovely day, I thought.



Figure 6: Lundin Links Beach

Nectarine and tomato salad

As summer really comes into its own, all the soft fruits are at a peak just now. Nectarines are not something we grow in this country as they really need the heat of the sun. You may get a few peach trees growing on the old glass houses of the grand estates but nothing will fruit outside. I first came across nectarines in France and in the region I was in, they called them *Brouignon*. I loved them as they had a peach like flavour but without the furry skin that I did not like (still don't!) Tomatoes are another thing altogether, technically also a fruit but we tend to lump them in as a vegetable. They are in season just now and this idea combines the two fruits in a delicious light dish. A typically Italian idea in its simplicity, again really ripe fruits are required. This is a lovely dish for a summer lunch party, barbeque or picnic.

Ingredients

4 nectarines
4 large tomatoes
8 leaves basil, roughly torn
Tbsp, extra virgin olive oil
1 tsp rich balsamic vinegar
squeeze of lemon juice
Sea salt and freshly ground black pepper



This dish is happy to sit for a while at ambient temperature.

Christopher invites food-related questions. Contact him at:
ct@christophertrotter.co.uk

Method

- 1 Cut the nectarines into wedges around the stone, about 8 in all.
- 2 Cut the tomatoes similarly, although without the stone!
- 3 Gently mix together with the basil leaves, oil, lemon juice and a little salt and pepper.
- 4 Place in a bowl and splash the balsamic on top.

Christopher's books may be bought from:
<https://christophertrotter.co.uk/shop/>

PUZZLE PAGE

Unite these fictional dogs with their owners.

For bonuses, give the full name of the owner, and say where they appeared.

- | | |
|------------|-------------------------------------|
| Black Bob | Tintin _____ |
| Bull's Eye | Beryl _____ |
| Bullet | Dennis the Menace, <i>The Beano</i> |
| Foo Foo | Andrew _____ |
| Gnasher | Anita _____ |
| Idéfix | Sarah Jane _____ |
| K-9 | Bill _____ |
| Krypton | George _____ |
| Marley | Walter _____ |
| Pearl | Clark _____ |
| Perdy | Roy _____ |
| Pongo | Dorothy _____ |
| Schmeichel | Obélix _____ |
| Snowy | Roger _____ |
| Timmy | John _____ |
| Toto | Chesney _____ |

Easy Sudoku

9	8				3			4
			7	5	6	8	2	
	6		9		8			
	2				5	3		6
1				6			9	
		4	1			7		
7	5		6					
		6			7			5
		3						

Moderate Sudoku

8								7
	9		5					3
				6	8		5	2
7							3	
1				3	2			4
				9				
2		1			4	7	9	
4	6			5		3		1
		3		1	6	4		5

Countdown

Use + - x ÷ to make these numbers into the large number on the right:

75	50	3	4	8	9	228
25	1	2	4	7	9	981
2	3	4	5	7	7	106

Brainteaser

Lying at anchor, a boat has a ladder hanging over the side. The rungs are 40 cm apart. At low tide, the bottom rung of the ladder just touches the water. The tide rises 2 metres. Which rung will the water-level reach now?

The Temple

The east end of Lower Largo is still known as “The Temple”. It was part of the lands owned by the Knights Templar. Mr Wilkie tells us that the designation of the Temple should be more fully and accurately ‘The Temple Lands of Strathairly.’ The eastmost portion of what is usually included under Largo is built on them. They stretch to the solitude of Dumbarnie Links, a warren of rabbits, intersected by the burns that through it seek the sea from Largo Law and Lahill Craig. It was in the days of Malcolm the Maiden (1146 – 1165) that the stalwart and stately knights of the Temple, earliest of all the military orders, surrounded by a halo of romance and the glamour of chivalry, first became familiar figures in Fife ...

This is an extract from the *Village Book*, 1932. It may be read in the Library.

Once this magazine has been published, it can be read online at:

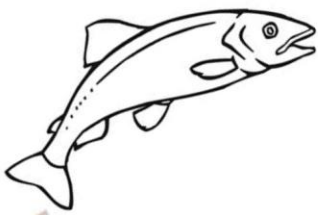
www.largocommunitiestogether.org.uk

Scroll down to the Community Pages, then click on our logo:



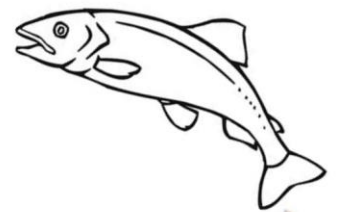
John Archer Fishmerchant

Main Street, Lower Largo



Tues – Fri: 7.30 – 1.00

Sat: 8.00 – 10.30



Selling from the van in front of the Old Fish Shed

Contact No: **01333 329850**
if you would like fish delivered

This true story I must tell
I hope you'll take it very well
I know there'll be some who doubt it
But let me tell you all about it.
I like to walk along the shore
Picking up sticks, coal and more
On Largo Beach, towards Shell Bay
You'll never guess who came my way.
A naked man with a beautiful tan
Who smiled and said "good morning ma'am"
Am I dreaming or is it true?
I didn't know just what to do
I kept on walking: wouldn't you?
On to Largo I did run
To tell my friends and have some fun
Norma in the Central Store
Couldn't wait to hear some more.
She asked me with a cheeky grin
"A patron from the Railway Inn?"
Oh no, I said he's not from here
With a body like that he wouldn't drink beer.
The customers laughed and laughed some more
Some dodgy comments by the score
Up the brae to Station Park
To see the gang and have a lark.

"Said Nessie, where did this take place?"
And Joey with a smiling face
Said "I can't believe it if it's true
I wish we had been there with you"
Anne, she was also there
Sitting in her usual chair
Drinking tea and looking on
Eating Nessie's homemade scone.
Then she handed me her cup
And said that things were looking up
I've stayed here seventy years and more
And never heard the like before.
Jings look at the time I'll have to fly
Jean "Tell us more" was Nessie's reply
I told them the details and left them in kinks
Then made my way home to Lundin Links.
So, when they park their cars and go
Past the Temple know you know
It's not to give their dogs a run
They've heard my tale and want some fun.
The moral of this poem must be
Go have some fun and laugh like me
Share it with your friends galore
And you'll have friends forever more.

Lundin Sports Club

Tennis, Squash and Table Tennis

With thanks to the Fife Environment Trust we are delighted to have three new all-weather courts.

Coaching: we run courses for adult beginners and intermediate players, and summer camps for primary school juniors.

Courts: are always available during the day and at weekends and there is some availability during weekday evenings.

Visitor rates are very affordable at £3/hour for an adult, £2/hour for a child, with a maximum rate of £7/hour for a court.

To find out more and to book a court please use our Clubspark page
<https://clubspark.lta.org.uk/LundinSportsClub>

We are also on Facebook
www.facebook.com/LundinSportsClub



Largo Pier - Restoration and Renovation

A great deal has happened since I wrote about Largo Pier for the May edition of *Largo Links*.

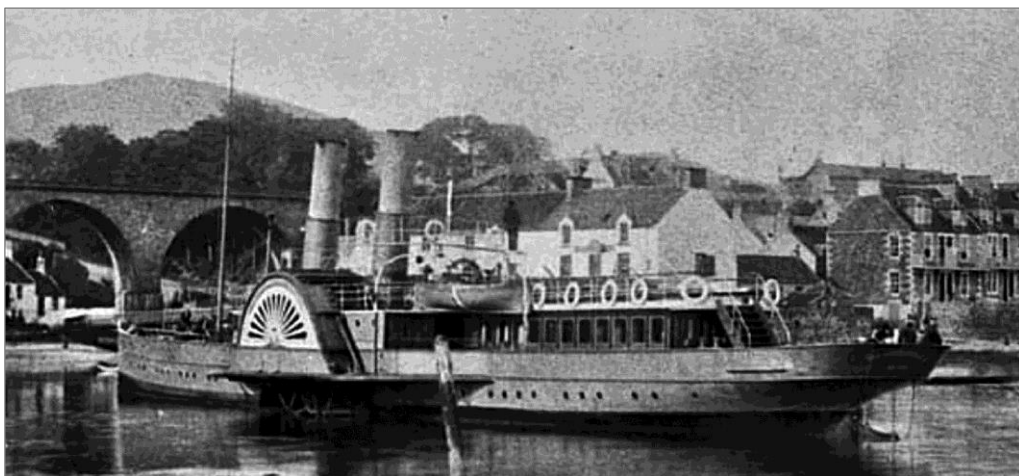
By far the most important event is the Crusoe Hotel passing into the control of Rachel and Graham Bucknall. You will have seen all the news on the reopening which took place on 16th July. Having the Crusoe back as a major focal point in the village is a great event for residents and visitors alike. However, it is also of major importance for the work of the Pier Group. After many months, at last we can start discussions on the pier renovation and restoration project. We have already met with Graham and Rachel and they are fully aware of our plan to take the outer section of the Pier into community ownership. A full agreement on this will take a little bit longer but we have been assured that we have a willing partner in the new team at the Crusoe.

Also, of great importance in our aim to see the Pier restored to its former glory is a potential partnership with Fife Coast and Countryside Trust. As many of you will know, the Trust is a local independent

opportunity to experience Fife's great outdoors. The Trust looks after over 30 sites and path networks throughout Fife including the Coastal Path, Fife Pilgrim Way, the Lomond Hills Regional Park, local nature reserves and other locations which are important for recreation and conservation. In discussions with the management of the Trust it has become apparent that the project to restore the Pier fits well with their aim to enhance Fife's coastal fringe for the benefit of all. The Trust can be of great assistance to us in the raising of funds from major grant-awarding bodies.

We look forward to moving forward with the project as soon as possible. We are actively considering further fund-raising schemes and will give you news of these at the earliest opportunity. In the meantime, you will be kept advised through further articles in *Largo Links*, the Largo Facebook page and the LCT website.

Jimmy Simpson, Chair, Largo Pier Subgroup of LCT



charity dedicated to giving everyone the

There was an article in the May edition of *Largo Links*, showing the Chain Pier, Newhaven and mentioning some ferries in the 1830s. This photo is from much later, probably 1890s, but it shows what was once possible at Largo Pier.



WE'RE OPEN!

THANK YOU!

We would like to say a huge thank you for the warm welcome we've received. It means the world to us.

We feel incredibly honoured to be looking after this iconic venue and hope that you can come and see us soon.



OPENING TIMES

OPENING EARLY JULY

Monday - Friday: 9.30am - 11pm (10pm outside)

Saturday & Sunday: 9.30am - 11.30pm (10pm outside)

KITCHEN HOURS

Breakfast/Coffee
7 Days - 9:30am-11am

Afternoon service
Monday - Friday:
12-3pm (last booking 2.45pm)
5pm - 9pm (last booking 8.30pm)
Saturday & Sunday: 12-4pm 5-9pm (last booking)

Reduced menu available daily from 3 -5pm

PRIVATE DINING AT THE CRUSOE

We are now taking bookings in our newly refurbished private dining room. Whether you are looking to join us for an event or celebration we can certainly look after you and cater to any occasion. If you have any queries please email info@thecrusoe.com or contact us on 01333406775. (maximum 26 guests)

Be the first to find out about all of our new offers and events by subscribing to our newsletter.

Head to the website www.thecrusoe.com

FOOD AND DRINK

HEAD CHEF ROSS TRAIL HAS SPENT THE LAST 11 YEARS AT THE BRIDGE INN, RATHO, SERVING UP WONDERFUL DISHES USING OUR OWN HOME GROWN VEG AND OUR OWN BRED PORK.

WE PRIDE OURSELVES IN SOURCING LOCALLY AND WORKING WITH THE SEASONS WHEN DESIGNING OUR MENUS. WE ARE LUCKY TO BE SURROUNDED BY SO MANY GREAT PRODUCERS IN FIFE AND WE LOOK FORWARD TO SHOWCASING THEM ON OUR MENUS.

OUR DRINKS MENU SHOWS THE SAME ATTENTION TO DETAIL AS OUR FOOD. WITH CREATIVE COCKTAILS, A FABULOUS WINE LIST AND SOME DELICIOUS LOCAL BEERS, GINS AND MALTS.

VISIT OUR WEBSITE TO VIEW OUR MENUS
WWW.THECRUSOE.COM

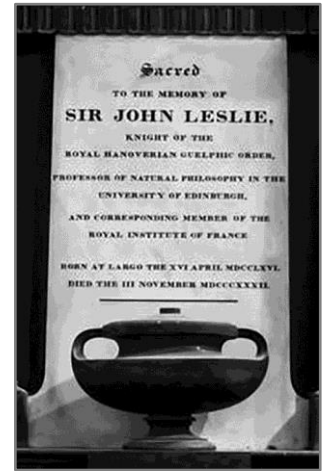
OUR GENERAL MANAGER JACKIE AND HER TEAM LOOK FORWARD TO WELCOMING YOU ALL SOON.



Sir John Leslie

Sir John was mentioned (fictionally) in the May issue of *Largo Links*. He was a real person, born 1766 in Largo and died 1832 at Coates, near Largo.

He was a gifted youngster entering senior mathematics class at St. Andrews University in his thirteenth year. He later became Professor of Mathematics and subsequently Professor of Natural Philosophy at Edinburgh. He was best known for his studies into heat, including the first artificial production of ice.



A portrait of Sir John, and his memorial stone in Largo Kirk

On the centenary of his death, the Edinburgh Mathematical Society held a memorial lecture in his honour. Among other things, it was said that: *“Leslie was a self-taught mathematician and physicist”* and *“In his mind we observe a strife between the contrasting outlooks of the pure scientist and of the engineer.”*


ewan fraser
JOINERS & BUILDERS

Telephone

01333 329926

Mobile

07595 491588

Email

callumhomes@yahoo.co.uk

Community Walking Group

Yvonne Stephenson and Moira Bell, of the Coastbusters & Largo Parish Church walking groups, have combined and formed a new Community Walking Group.

We will organise 3 different level of walks each month. Information on the walks can be found on the Coastbusters Facebook page, Largo Parish Church Facebook page, posters at the Library and in this magazine. A brief description of the 3 levels and dates for your diary are as follows.

The Plodders.

3 August, 7 September, 5 October

This group will meet on the 1st Tuesday of the month **at 10.30** in the Library car park. This walk is aimed at those who may have lost confidence to walk on their own. It is a very short walk *around the block* on wide even paths. Returning to the library for a refreshment and a chat, perhaps about a book recently enjoyed.

The Strollers.

8 August, 12 September, 10 October

This group will meet on the 2nd Sunday of the month at the Temple car park **at 2.00pm**. The walk will always be relatively flat, a reasonable walking surface and approximately 3 miles long. We have decided for the next few months to do the same local walk. The car park to the tank-traps along the old railway line and back.

The Striders.

28 August, 25 September, 23 October

This group will meet on the 4th Saturday of the month **at 11.00am**. The meeting point will vary depending on each walk. These walks will be 4 or more miles long. The walk could entail an incline, and the surface may be uneven.

August: meet at Silverburn car park, and follow circular route via Letham Glen and Blacketside.

September: meet at Ruby Bay car park, Elie and follow a circular route via the Elie estate, Earlsferry, returning to Ruby Bay.

October: meet at Ruby Bay car park, Elie and walk to St Monans along the coastal path returning by the same route - or by bus.

For further information contact:

Yvonne Stephenson **07813378512**

Moira Bell **07717572035**



Podiatrist
Bob Harper

Will call at your house
throughout the Largo Area

Telephone: 01333 311 833

The Studio, 114 Main Street, Lower Largo

Paintings – Prints - Signwriting

Open by appointment

01333 320174 smartanderson@live.co.uk

Southside SHypnotherapy

- Are you suffering from anxiety, low mood, insomnia, phobias?
- Would you like to increase your confidence or self-esteem?
- Would you love to stop smoking?
- Or do you just need help to relax?

Solution focused hypnotherapy sessions are relaxing, enjoyable and focus on the present and the future - what clients want to achieve - rather than going over painful past experiences.

For more information about what's involved please visit my website:

www.southsidehypnotherapy.com

For an informal chat please get in touch - I will be delighted to hear from you

email: marjorie@southsidehypnotherapy.com

mob: 07751 249181

Caroline Trotter Photography



There is something special about photographing people and getting to know them. My emphasis is on taking photographs 'on location' away from the confines of the studio, using natural light to create classic and relaxed portraits with a mixture of posed and spontaneous images.

I am a qualified member of the Master Photographers Association and the Society of Wedding and Portrait Photographers, based in Upper Largo.

Please contact me to discuss your ideas

www.carolinetrotter.co.uk

caroline@carolinetrotter.co.uk

07933 510243

Transport to medical appointments

Transport to attend medical appointments or even to go shopping can sometimes be a problem for the elderly and vulnerable. Those who don't have their own transport face multiple bus journeys or taxis.

The table below provides **approximate** daytime single journey taxi fares to a range of typical destinations from a location within Lower Largo.

Destination	From Lower Largo KY8 6DX	Approximate taxi fare
Leven Health Centre	3.5 miles	£8.50
Victoria Hospital	12 miles	£27.00
Asda Kirkcaldy	11 miles	£26.00
Morrison's Glenrothes	10 miles	£22.50
Q. Margaret Hospital	23 miles	£52.00
P'weem/Elie Health Centre	9 miles	£20.00
Cupar Town Centre	9 miles	£18.00
St Andrews Hospital	10 miles	£24.00
Markinch Railway Station	9 miles	£20.00
Leuchars Railway Station	14 miles	£30.00
Dundee Railway Station	22 miles	£45.00
Edinburgh Airport	36 miles	£65.00

For return journeys, unless a specific time can be arranged, the person will require to phone the taxi company to arrange to be picked up and taken home. This obviously involves a time delay.

As an example, a return journey to the Victoria hospital in Kirkcaldy will cost around £54 and involve a wait of around 20 minutes from when the taxi service is phoned requesting pick up from the hospital.

There is an alternative however: **Continuing Care (North East Fife) -CCNEF** was established in 1980 by two MacMillan nurses who helped cancer patients to get to their important hospital appointments. Their service is built upon a doctrine of helping local residents get to all types of

medical appointments, especially in areas that are not renowned for good hospital transport facilities, such as rural areas. About 2 years ago the Scottish Ambulance Service, the original first point of call, reduced their availability to the public at large, limiting their service to those of the greatest medical need. They now refer the clients they now cannot help to **CCNEF** and as a result, many people require their help. **CCNEF** is a registered charity with over forty years' experience, striving to cater to the needs of those who require reliable transportation to and from health-related or any associated social appointments.

There is a Co-ordinator who works normal office hours and who can be contacted on **01334 8800743**. The co-ordinator will endeavour to help by contacting one of their volunteer drivers, who get their whole journey travel expenses reimbursed at £0.45 per mile from CCNEF. Those who use the service are asked for a donation. Normally, the volunteer driver will wait at the venue. The co-ordinator will willingly provide details concerning costs, for the level of donation suggested when you book an appointment.

The co-ordinator would also welcome enquiries from any local residents who may be interested in becoming a volunteer driver.

More information is available at:

www.continuingcarenef.org.uk

01334 880743

Largo Library/Community Hub

We are open and our volunteers are working very hard to ensure there is a great



selection of books waiting for you! Please pop in to browse, borrow and return books. We also have books and DVDs for sale, printing and photocopying services, free Wi-Fi and local information; and don't forget to collect your free food waste disposal bags. We are happy to accept your good quality book donations and there is a Book World book bank outside the library so you can recycle any unwanted older books.

We can't wait to get started with our popular programme of film nights, evening literary events, Bookbug and Science Saturdays as soon as we are able.

We have introduced measures to keep you safe, including hand sanitiser, limiting visitor numbers, face masks, Perspex screens and enhanced cleaning practices.

We look forward to seeing you at

7 Lundin Square, Lundin Links KY8 6BH
Tuesday 2-5pm, Wednesday 10-1pm,
Thursday 10-1pm and 2-5pm,
Saturday 10-1pm.

Or email us at
largolibraryfife@gmail.com

How the Poor were Maintained

In 1836, the average number of poor persons receiving aid was 12, and the average sum allotted to each was £1 15s 5d. The annual amount of contributions for relief was £28 6s. The proportion of this arising from church collections was £13 3s 8d, and from other funds, £15 12s 4d. There was then, says Dr Lawrie, little disposition among the poor to refrain from seeking relief. The days when application for such relief was reckoned degrading had long passed away.

Extract from a book about the villages, 1907.
It may be read in the Library.

Seascape Largo - Bed & Breakfast

21 Temple, Lower Largo, Fife KY8 6JH
2 Comfortable double/twin rooms with en suite showers

On the Beachfront
TV's in rooms, free Wifi
Guests' sitting room, Full Scottish breakfast

To book contact: Matt Allan
www.seasapelargo.co.uk

Tel: 01333 320 008 Mob: 07930 917 493

Email: seascape.largo@gmail.com

P e r i w i n k l e B e a c h S h o p

Beach Art Handicrafts & Sea Glass Jewellery

Seaholme
Drum Park
Lower Largo
Beach Front Studio

Flexible opening hours or by arrangement

Please call 07989 962848
Or visit our website:-
www.periwinklebeachshop.com

Car Rally

Glenrothes Motorsport Club are organising a closed road special stage car rally to take place in early April 2022

utilising closed tarmac roads in the rural Largo, Ceres & Kennoway area. The “Pathfinder Rally” will be organised on public roads, some of which will be legally

closed to allow the competition to take place. The rally will bring many visitors to the area, with Closed Road Rallies proving tremendously popular with competitors, volunteers, spectators and residents alike. A similar rally on the Isle of Mull has been shown to bring £1.7 million of economic impact each year – it’s anticipated this first running will bring upwards of £0.5 million to the local economy in Fife, with potential for growth going forward. In addition, the event will provide an excellent platform for Science, Technology, Engineering & Maths (STEM). It will provide engagement opportunities for young people, volunteering opportunities, development of technology including ‘green’ solutions, and showcasing all that Fife’s rural communities have to offer ... on top of being a great day out and occasion, for our communities, residents and visitors alike!



Motor rallies are permitted through the provisions contained in Section 13 of the Road Traffic Act 1988 and detailed in The

Motor Vehicles (Competitions and Trials) (Scotland) Regulations 1976, with closed road events being held in accordance with The Motor Sport on Public Roads (Scotland)

Regulations 2019. In seeking the necessary road closures the relevant Police Authority and other Relevant Authorities have been notified in accordance with the legislation.

Proper car rallies in simple terms are held against the clock, where a ‘crew’ (Driver & Navigator) will attempt to drive as quickly as they can along a specific road. It will be closed to the public, and will be typically less than 10 miles long. Rural roads (back roads) are chosen as they are generally more challenging to drive and the rallies are on the whole more welcome there than in a busy town for example.

Although this is not the World Rally Championship yet, it is as close to the Monte Carlo rally as we will get in this area and there will be many top UK rally crews and top-level rally cars in attendance.

Traffic Lights Trial Largo Road Lundin Links

In 2019 there was a serious Road Traffic Accident in the “dip” in the centre of Lundin Links when a tractor overturned and fell into the well of two houses in Largo Road. This resulted in temporary traffic lights being installed for several weeks/months to allow repairs to be carried out to the walls and fences of the damaged properties.

This afforded an opportunity to assess temporary traffic lights in operation. In particular the temporary traffic lights enabled HGV buses and articulated vehicles to negotiate the blind corner at Mill Wynd in safety, as well as enabling residents to safely cross the road at Mill Wynd. It also enabled HGV buses and articulated vehicles to “swing out” onto the opposite side of the road, with no oncoming traffic, at the blind bend at the Cupar Road junction.

The incident was discussed at public meetings of the Community Council, resulting in a Site meeting being held, attended by the Lead Traffic Consultant of Fife Council, two of the four Councillors of Fife Council, several Community Councillors, and a number of the residents affected.

After two hours of, at times, intense debate, the Lead Traffic Consultant undertook to carry out a temporary traffic lights trial in July 2020 for 14 days and this was supported by the two Councillors of Fife Council, the Community Councillors, and the residents present. Due to the pandemic the trial was postponed from July 2020 to July 2021 but has not yet taken place.

The representative of the Lead Traffic Consultant has advised recently that:-

We are still waiting for speed survey results to evaluate the impact of the recently introduced speed cushions. In any case the feedback we have received is that residents and businesses are alarmed about the possibility of tailbacks pollution and loss of trade due to the jams caused by the lights which in our opinion are highly likely. On that basis we remain contrary to this trial.

Also, one of the four Councillors of Fife Council has recently expressed his opposition to the Traffic Lights Trial on the grounds of “tailbacks”, cost (but only temporary “road works” traffic lights are to be set up) and the effect of the speed cushions (but many vehicles still exceed the speed restriction of 20mph in the “dip”).

It was agreed at the Site meeting that the point of the Traffic Lights Trial promised by Fife Council was to establish whether any such “tail back/jams” affecting the shops and businesses would or would not result from the Trial. The promised Trial has not taken place to establish this and it appears to be self-evident that it is premature to prejudge any Trial before it has taken place.

The “timing” sequence of any traffic lights is crucial as the wrong “timing” sequence can of itself cause “tailbacks”. In the circumstances the Community Council wish to know your views on this important issue affecting your community.

Please email or telephone on the number below to let us know your views, or alternatively please attend the next virtual meeting of Largo Area Community Council. We will be delighted to see you! The Community Council meet on the third Monday of each month.

Email: peter.aitken@lundinconsultancyservices.co.uk Tel: **01333-320574**

Great choice of carefully selected used cars for sale



- MOT Testing - Brakes
- Servicing - Clutches
- Tyres - Exhaust

Helpful, friendly & knowledgeable staff
Always competitive prices

Mercury, YOUR local garage!

Largo Rd, Lundin Links Fife, KY8 6DJ
Tel. 01333 320158/ 329197

Email

Mercurymotorsport@hotmail.com

Website

www.mercurymotorsport.co.uk

Moderate Sudoku

9	7	3	2	1	6	4	8	5
4	6	8	7	5	9	3	2	1
2	5	1	3	8	4	7	9	6
5	3	4	1	9	7	2	6	8
1	8	9	6	3	2	5	7	4
7	2	6	8	4	5	1	3	9
3	1	7	4	6	8	9	5	2
6	9	2	5	7	1	8	4	3
8	4	5	9	2	3	6	1	7

Easy Sudoku

4	9	3	5	2	1	6	8	7
2	1	6	8	3	7	9	4	5
7	5	8	6	9	4	2	3	1
6	3	4	1	8	9	7	5	2
1	7	5	3	6	2	4	9	8
8	2	9	4	7	5	3	1	6
5	6	2	9	4	8	1	7	3
3	4	1	7	5	6	8	2	9
9	8	7	2	1	3	5	6	4

The water-level will still reach the bottom rung. Boat and ladder rise together.

Brain teaser

$$\begin{array}{l}
 3 * 5 * 7 = 105; \\
 2 * 4 = 8; \\
 8 - 7 = 1; \\
 105 + 1 = 106
 \end{array}$$

$$\begin{array}{l}
 25 * 4 = 100; \\
 100 + 7 + 2 = 109; \\
 109 * 9 = 981
 \end{array}$$

$$\begin{array}{l}
 9 - 8 = 1; \\
 75 + 1 = 76; \\
 76 * 3 = 228
 \end{array}$$

Countdown

- Black Bob Andrew Glen, *The Dandy*
- Bull's Eye Bill Sykes, *Oliver Twist*
- Bullet Roy Rogers, *King of the Cowboys*
- Foo Foo Walter the Softy, *The Beano*
- Gnasher Dennis the Menace, *The Beano*
- Idéfix Obélix, *Astérix and the Banquet*
- K-9 Sarah Jane Smith, *Dr. Who*
- Krypton Clark Kent, *Superman*
- Marley John Grogan, *Marley & Me*
- Pearl Beryl the Peril, *The Topper*
- Perdy Anita Dearly, *101 Dalmatians*
- Pongo Roger Dearly, *101 Dalmatians*
- Schmichel Chesney Brown, *Coronation Street*
- Snowy Tintin, *The Adventures of Tintin*
- Timmy George, Georgina Kirrin, *Famous Five*
- Toto Dorothy Gale, *Wizard of Oz*

Dogs & Owners

Local Directory - Telephone Numbers

LACRT Helpline	0800 999 3465	McDonald/ Stevenson)	01333 432 555
Local Shops and Businesses:		National Domestic Abuse Helpline	0808 2000 247
Zaphar's Premier Store	01333 320 851	National Emergency <i>Fire, Police, Ambulance</i>	999
Stuart's of Buckhaven	01333 320 213	NHS 24 (includes Mental Health Hub)	111
Blacketyside Farm Shop + Meals	01333 423 034	Over 50's Help	0800 1244 222
Archer's Fish	01333 329 850	Psychological Services/Emotional	
Lundin Links Pharmacy	01333 320 274	Wellbeing of children	01592 583 349
All above are currently delivering			
Andy's Store	(Text) 07754 329 042	Samaritans.	116123
	(Shop) 01333 329 237	Scottish Gov. Business Helpline	0300 244 4000
Allan Moncrieff Alarms	01333 320 075	Scottish Welfare Fund	0300 5550 265
Coates IT Consulting	01333 329 118	SAMH mental health (not crisis)	0344 800 0550
Donaldson & Son Joiners, Undertakers	01333 360 228	Scoonie Medical Practice and	
Forth House Caravan Site	07718 788 317	Lundin Links Branch	01333 432 588
Headrush, Upper Largo	01333 360 437	Universal Credit Helpline	0800 328 5644
Hillhouse Boarding Cattery	01333 360 582	Women's Aid-Fife	0808 802 5555
Jane's at Nineteen	01333 320 266	Women's Aid-Scottish	0800 027 1234
Martha Watt Podiatry	07909 964 898	Council & Utilities Helpline Numbers:	
Mercury Motorsport	01333 320 158	Fife Council	03451 550 000
Monturpie Guest House & Caravan Park		Fife Social Work	03451 551 503
	01333 360 254	Fife Housing Register Emergency	
Old Manor Hotel	01333 329 368	Accommodation.	03451 550 033
Penny & Black	01333 320 415	Fife Council (Roadworks & Emergencies	03451 550 011
The Beauty Box, Upper Largo	07452 814 881	and out of hours)	03451 550 099
The Finishing Touch	01333 320 956	Fife Rent issues	03451 550 044
The Studio	01333 320 174	Utilities Helpline Numbers:	
The Taxi Centre	01333 300 300	Electricity Emergency	0800 092 9290
Upper Largo Hotel	01333 360 347	National Gas Helpline	0800 111 999
Upper Largo Chandlery	01333 360 217	National Power Cut Helpline (from a mobile)	105
Vintage Barber, Lundin Links	07562 390 361	Scottish Power	0800 027 0072
Woodland Gardens Caravan and Camping Site		Scottish Water Emergencies	08000 788 788
	01333 360 319	SEPA Floodline	0345 988 1188
Medical and Mental Health Helpline Numbers:			
Age Scotland Helpline: <i>Confidential service for older people, carers and families. Call free</i>	0800 12 44 222	Politicians, Councillors, Churches	
Breathing Space (<i>low mood/anxiety</i>)	0800 83 85 87	MPs / MSPs	
Carers UK	0808 808 7777	Wendy Chamberlain, MP	01334 656 361
Childline UK	0800 1111	Jenny Gilruth, MSP	01592 764 815
Citizens Advice and Rights, Fife.	0345 1400 095	Local Councillors:	
Community Police and Police Scotland	101	David Alexander (Co-Leader Fife Council)	
Continuing Care North East Fife	01334 880743		01592 764 815 / 03451 555555 Ext 490127
Cosy Kingdom: Telephone advice service for any energy billing or supplier issues	01592 807 930	Colin Davidson	07864 619 335
Covid 19 Community Helpline	0800 952 0330	Graham Ritchie	01334 828 969
Deaths/Still Births Registrations	0345 155 0099	Alistair Suttie	07515 289 170
Dental Advice Helpline	01592 226 555	Alternative number for Councillors	03451 555 555
East Neuk Emergency Planning Team (ENCEPT)	0800 999 6543		Ext 44232
Fire and Rescue	01224 728 600	Local Churches:	
Fife Covid 19 Helpline	0800 952 0330	Largo Parish Church	01333 320 850
Gingerbread Lone parent Helpline	01592 725 210	St Agatha's & St Giles RC	01333 423 809
Levenmouth Police Station	0845 600 5702	St Margaret's Episcopal Church	01333 426 609
Levenmouth Foodbank	07966 502 854	Baptist Church, Pittenweem	01333 312 041
Leven Health Centre (Drs Page,			

Online Directory

In previous issues, we printed a directory of websites and email addresses. Now it is online, with the advantage that it is 'clickable'. This means that you can click on the address, and go straight there. Go to:

www.largocommunitiestogether.org.uk

Scroll down to the Community Pages, then

click on our logo: 



Or ... if you can use QR codes, scan this to take you straight to the *Largo Links* Page.

Look for the button to the **Online Directory**

POST OFFICE

The Post Office

POST OFFICE

The PO Van will call on:

Mondays:	Lundin Links	9.00 - 11.00
	Upper Largo	11.15 - 12.15
Tuesdays:	Lower Largo	11.25 - 12.25
	Lundin Links	12.30 - 13.30
Wednesdays:	Lundin Links	10.15 - 11.15
	Upper Largo	11.25 - 12.25

These times were correct at the time of publication.
They may be subject to change.

Largo Area Coronavirus Response Team

Coronavirus remains with us and the team is still here to help.

Contact us on **0800 999 3465** if you need any help with the following:-

- Support to Connect - signposting service for enquiries.
- Support in Times of Need Fund – financial support with essentials e.g. baby food, nappies, food, white goods and hospital travel.
- Support with internet devices including laptops, tablets and phones.
- Telephone Befriending Service.

Largo Friends and Neighbours Telephone Befriending Service

0800 999 3465

Defibrillators can be found at the following locations:

Largoward	Village Hall - 25 St Andrews Road (A915) KY9 1HZ
Lower Largo	Andy's Store KY8 6BW
Lower Largo	Durham Hall KY8 6DL
Lundin Links	Lundin Golf Clubhouse KY8 6BA
Lundin Links	Lundin Golf Club Greenkeepers Shed, Links Road
Lundin Links	Homelands Trust KY8 6AT
Lundin Links	Stuarts the Bakers KY8 6AQ
Lundin Links	Lundin Bowling Club, Largo Road KY8 6AH
New Gilston & Woodside	Village Hall, KY8 5TF
Upper Largo	Simpson Institute, KY8 6EN



**Our team of fabulous
florists have been
creating beautiful
bouquets for the last 10
years for customers
throughout Fife.**



**Perfect pink peonies to ruby-red roses,
our fresh, seasonal flowers are sure to
bring joy to everyone.**

- Events
- Sympathy
- Weddings
- Bunches of Happiness

**Our team will give you endless inspiration
and advice to ensure you get fantastic
flowers whatever the occasion.**

Telephone: 01333 317051

Website: greenroomflorist.co.uk

Email: greenroomflorist@outlook.com

The Green Room

Blacketside Farm, Leven, Fife KY8 5PX